

PC-01

Viaduct

Malahi Pakdi Station to New ISBT

Fig: Works in progress at Khemnichak Station



Fig : Preparatory works for Erection of Platform cross arm at Patliputra Bus Terminal Station



Fig : Erection of concourse cross arm at Zeromilein



Fig.: Erection of Pier cap in progress at Malahi Pakdi



Fig : Station concourse cross arm erection in zeromile





Fig : Erection of concourse cross arm at Patliputra Bus Terminal Station



Fig : Cross Arm Erection in progress at Zeromile Station



Fig : Cross Arm Erection in progress at Zeromile Station



Fig : Portal Beam work in progress at Bhootnath station



Fig : Erected U-Girders between Bhootnath & Zeromile



Fig : Viaduct U-Girger erection in progress near Zeromile Station



Fig : Erected U-Girders between Bhoothnath & Zeromile



Fig : Ramp Work in progress at Malahi Pakri



Fig : Ramp Work in progress at Malahi Pakri in



Fig : Pier cap work in progress at casting yard



Fig : Pre cast Pier Cap work in progress at casting yard



Fig : Preparatory work for Pier Cap casting at Casting Yard



Fig : Preparatory work for U-Girder casting in Progress at Casting Yard



Fig : Casted U-Girder at Casting Yard



Fig : Casting of U-Girder in progress at casting yard

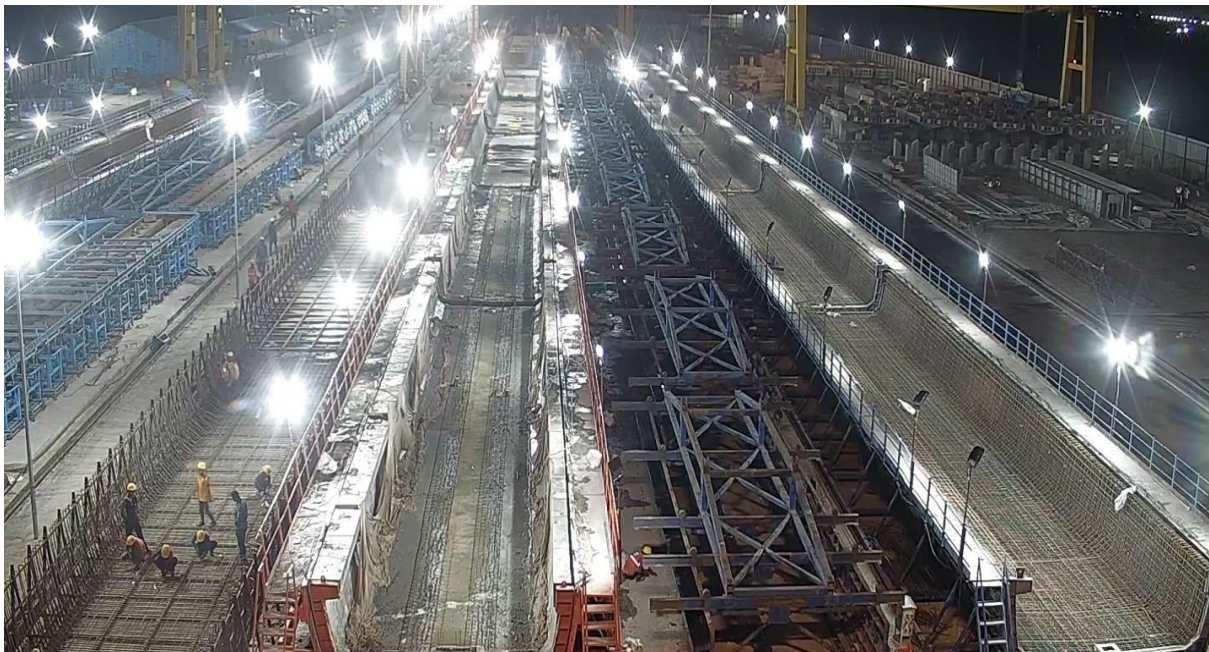


Fig : Casting of U-Girder in progress at casting yard



Fig : Preparatory work for viaduct U-Girder casting at Casting Yard

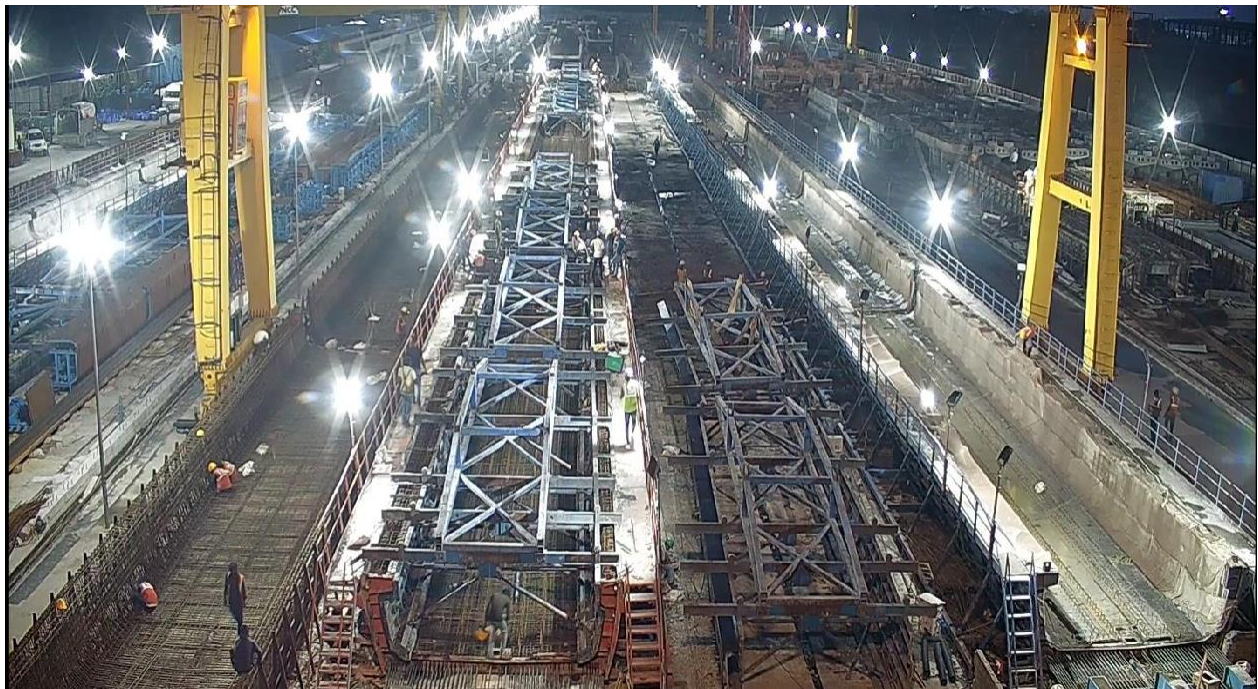


Fig : Stacking of Pier Cap & Cross Arm at Casting Yard



Fig : Concourse & Platform Cross-arm work in progress at casting yard

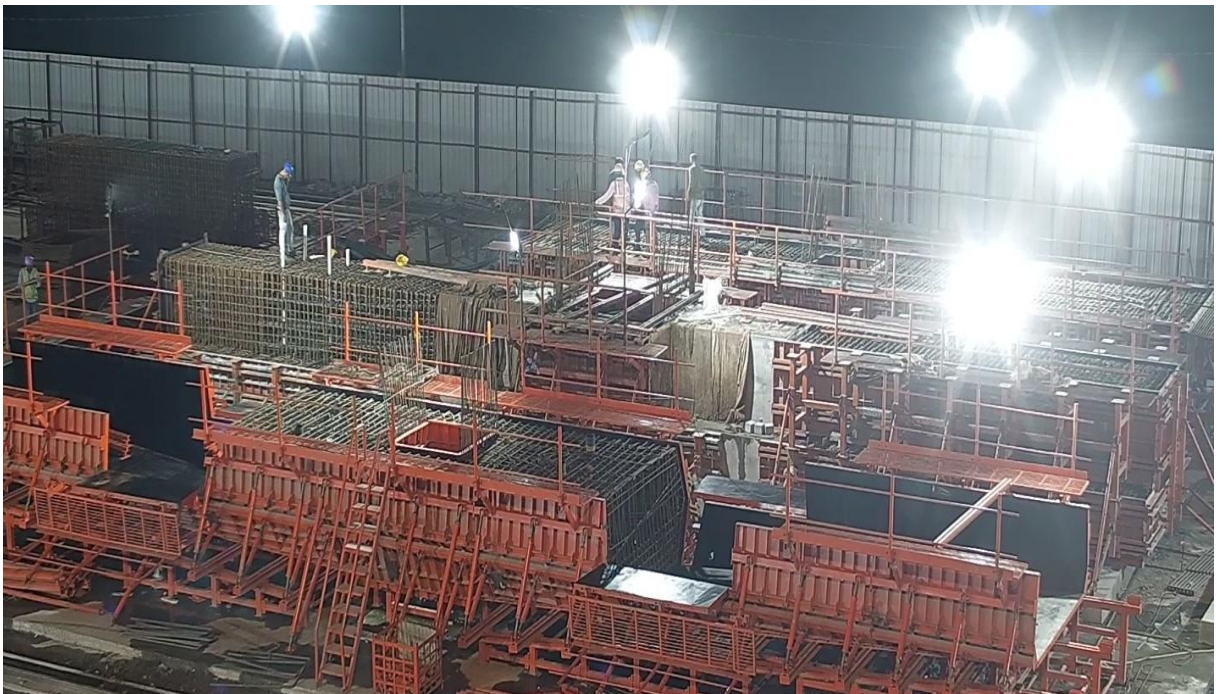


Fig : Concourse & Platform Cross-arm work in progress at casting yard



Fig : Preparatory work for Concourse & Platform Cross-arm casting at Casting Yard

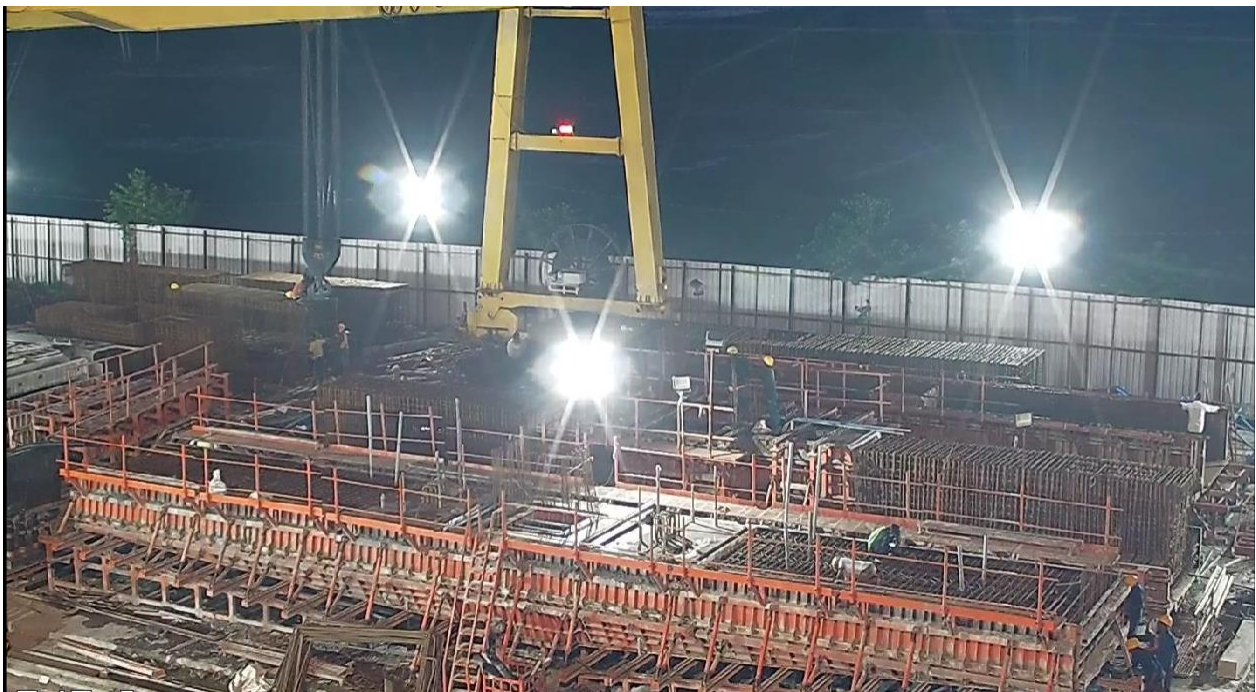


Fig : Cross Arms Stacking in PC-01 Casting Yard



