

PC-03

Underground Section Rajendra Nagar to Akahvani

Fig : Guide wall construction works at PMCH Station



Fig : Guide Wall shuttering works in progress in Rajendra Nagar



Fig : Office Building works in progress at Patliputra Bus Terminal Depot



Fig : Diaphragm wall grabbing works at PMCH Station



Fig : Diaphragm wall grabbing works in progress at Akashvani



Fig:Barrette works in progress at Moin Ul Haq stadium Station



Fig : Diaphragm wall rebar cage binding works at University Station



Fig : Barrette cage fabrication in progress at Gandhi Maidan Station



Fig : Diaphragm wall cage binding works at Akashvani



Fig : Diaphragm wall cage lifting works at University Station



Fig: Diaphragm wall works at PMCH Station



Fig : Diaphragm wall Cage lifting at Akashvani Station



Fig : Diaphragm wall works at Akashvani Station

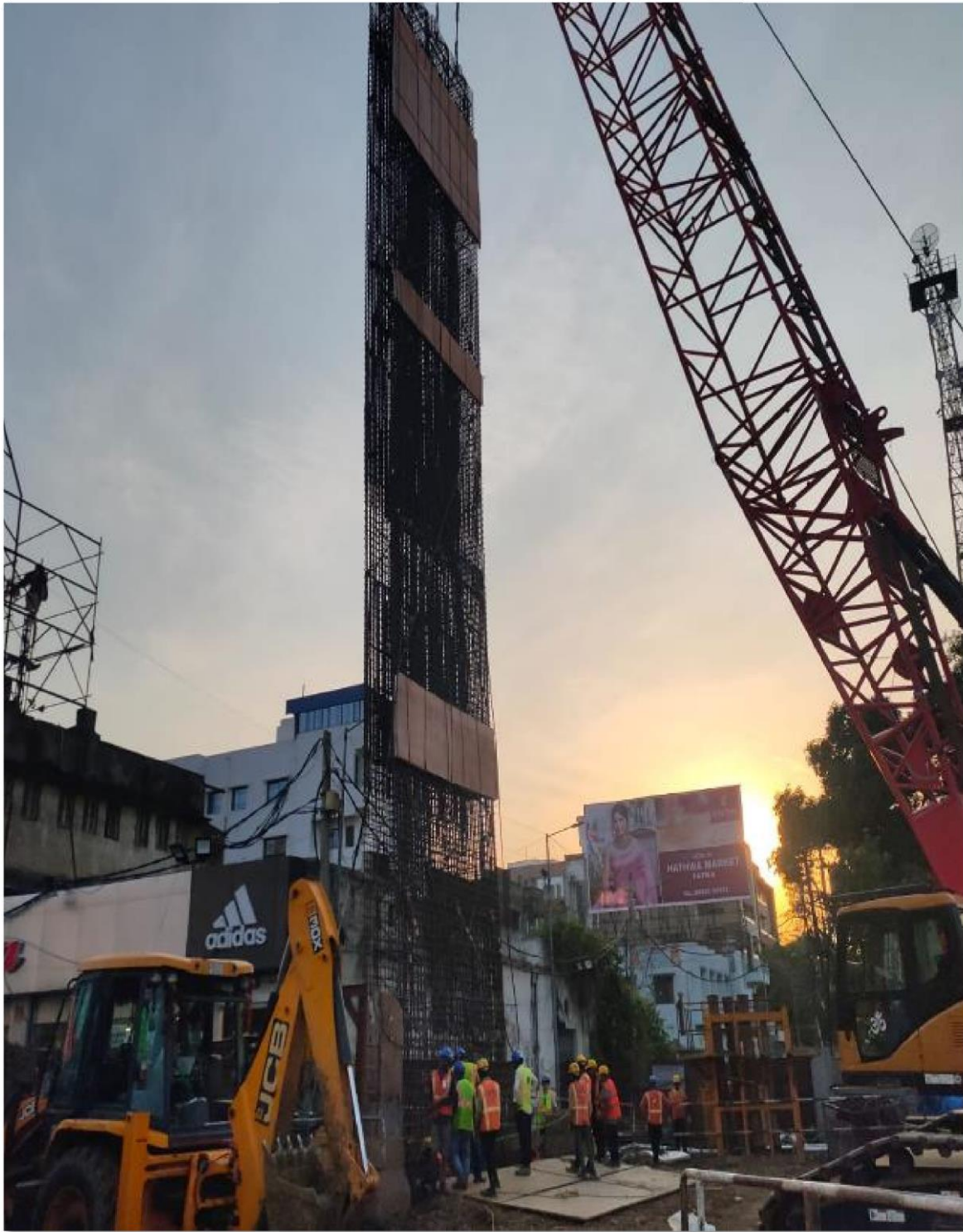


Fig : Retrieval shaft excavation works in progress at University



Fig : Plunge column fabrication works at University Station



Fig: Roof slab Reinforcement work in Progress at Akashvani Station



Fig : Roof slab Reinforcement work in Progress at Gandhi Maidan Station



Fig :Roof slab works in progress at MoinUl Haq stadium Station

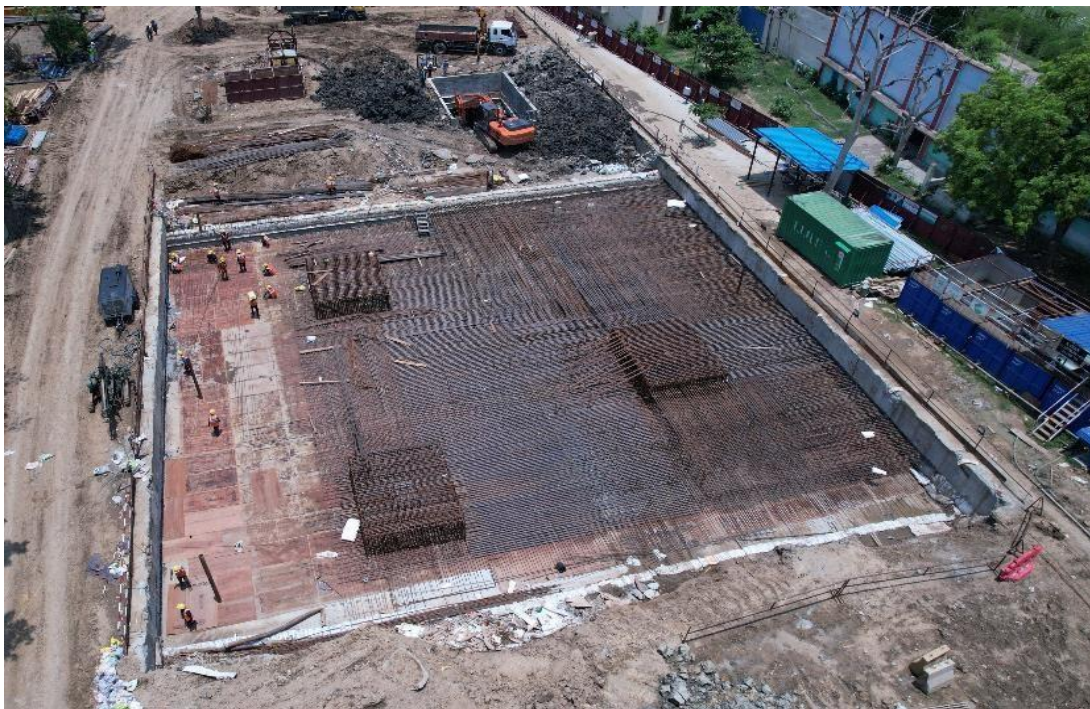


Fig : Base slab construction at Launching Shaft of Gandhi Maidan Station



Fig : Launching Shaft Roof slab Reinforcement work in Progress at University Station



Fig : Concourse slab reinforcement work in progress at Moin-UI-Haq Stadium Station



Fig : Roof slab construction at Akashvani Station



Fig : Roof slab construction at PMCH Station



Fig : Roof slab casting at Moin-Ul-Haq Station



Fig : Roof slab works in progress at Moin Ul Haq stadium Station



Fig : TBM Assembly works in progress at Gandhi Maidan station





Fig. 14: TBM lowering works in progress at Gandhi Maidan station



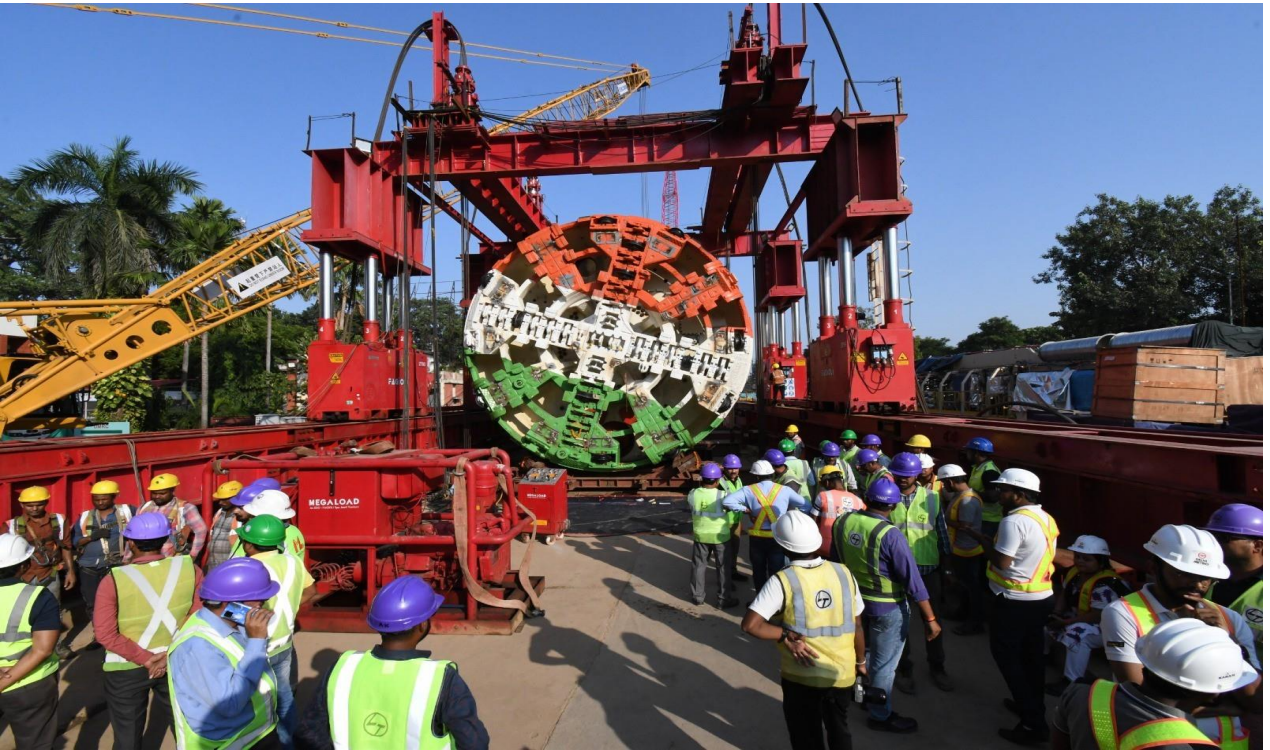


Fig : TBM-01 & TBM-02 lowering completed



Fig : TBM 01 initial drive in progress near Moin Ul Haq stadium



Fig : TBM 01 set-up at Moin-Ul-Haq Station



Fig : TBM-01 lowering completed



Fig : TBM's in MoinUl Haq stadium





Fig: Development of casting yard and Segment rings casting in progress





Fig : Batching plant (Capacity 60 Cum/hr) Installation completed at Casting yard



Fig : Segment stacking at Casting yard



Fig : Gantry erection works in progress at casting yard



