

# PC-04

## Viaduct

### Saguna Mor Station to Danapur Station

Fig. : Piling work in Progress in Saguna More



**Fig.: Piling works at Ramakrishna Nagar**



**Fig.: Pile Cap work in progress for shifting of existing 132 kV double circuit transmission line of BSPTCL**



**Fig : Pile Cap concreting in progress**



**Fig : Pile Cap casting work in progress at Ramkrishna Nagar Station**



**Fig : Pile Cap work in Progress at Saguna More**



**Fig : Pier work in Progress at Saguna More**



**Fig: Reinforcement work of Pier in progress near Saguna More**



**Fig.: Pier reinforcement work in progress between Mithapur to Ramkrishna Nagar Station**



**Fig: Pier reinforcement work in progress at RPS More Station**



**Fig. : Casted Pier**



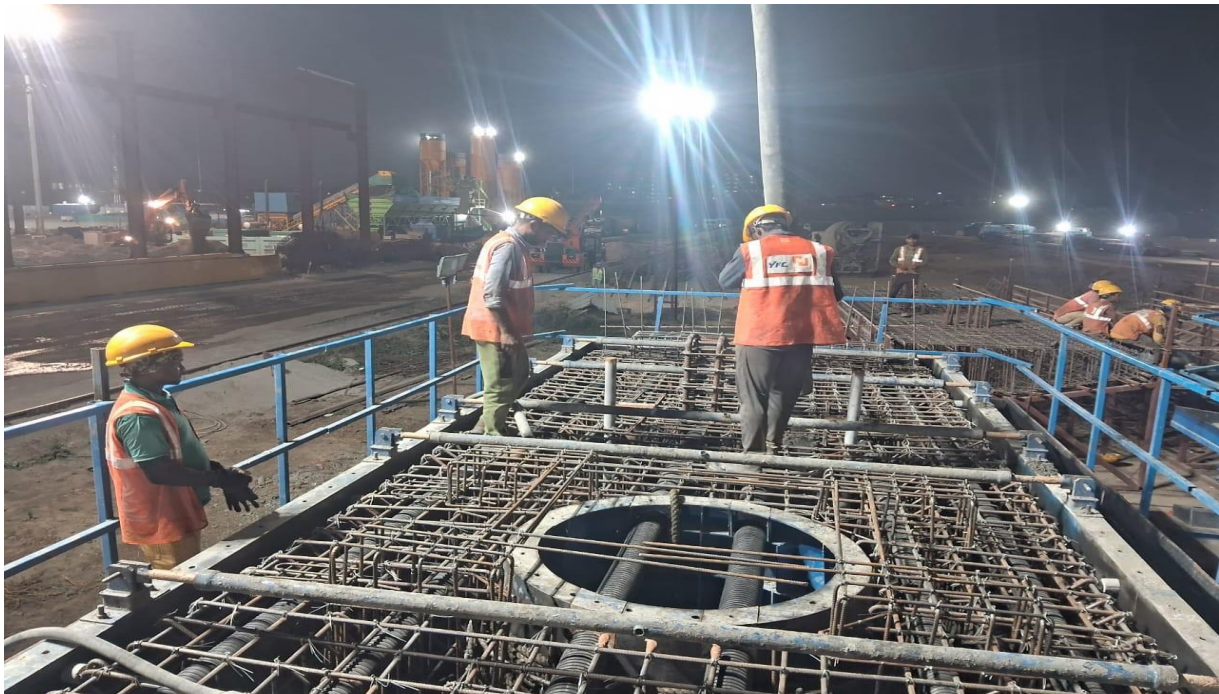
**Fig.: Station Pier casted at RPS More Station**



**Fig. : Pier Cap Casting in progress**



**Fig: Pier Cap concreting work in progress at Casting Yard**



**Fig.15: Erection of pier cap near Mithapur station in PC04 Contract**



**Fig.20: Erection of Pier Cap between RPS More & Patliputra Station in PC04 Contract**



**Fig.17: Erection of U-Girder in progress between RPS More & Patliputra Station in Progress in PC04 Contract**



**Fig.16: U-Girder erected between RPS More to Patliputra Station in PC04 Contract**



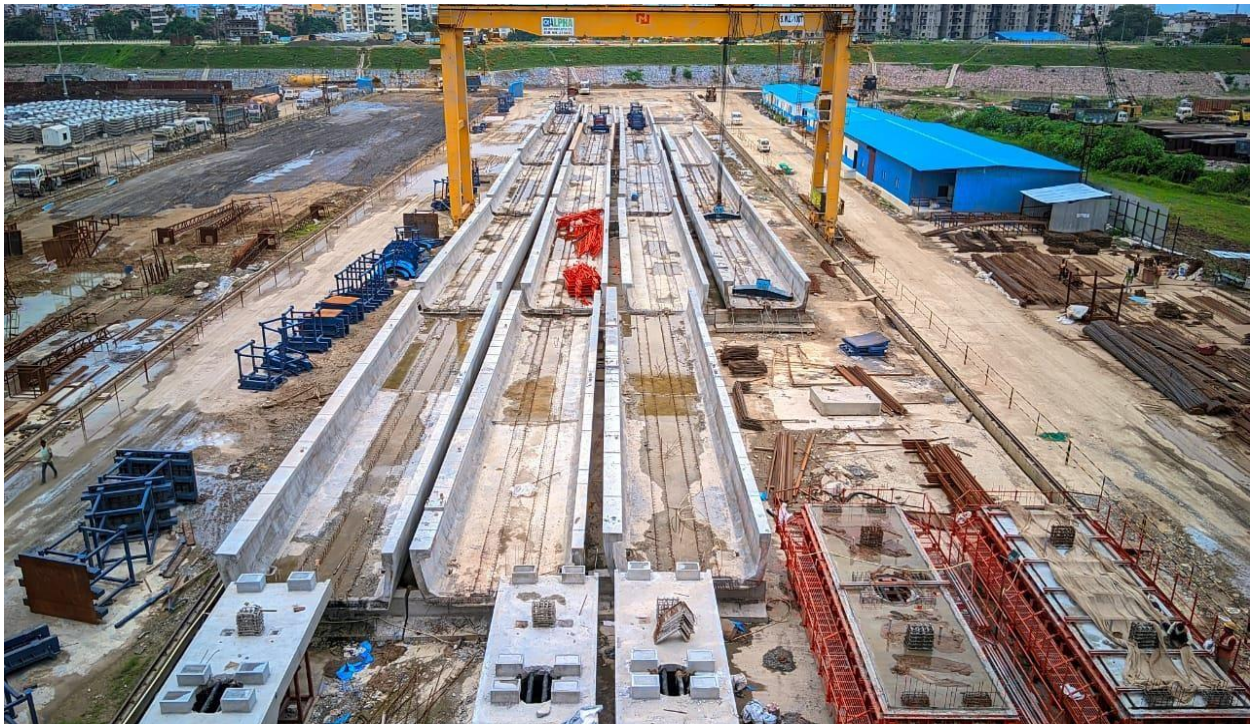
**Fig. 19: Development of Casting Yard and U Girder casting preparation in progress in Contract PC04**



**Fig.20 : Cage fabrication of U girder in progress in Contract PC04**



**Fig.18: U-Girder stacking at Casting Yard in PC04 Contract**





**Fig.18: U-Girder reinforcement work in Progress at Casting Yard in PC04 Contract**



**Fig.19: Concourse cross arm reinforcement work in Progress at Casting Yard in PC04 Contract**



**Fig.18: Anchor bolt plate casting**



**Fig.19: Erection of Monopo**



**Fig.21: Erection of Monopole and Diversion of electrical utility in progress at project sites of Patna Metro Rail Project**



